

SAMPLING GUIDE

SMOLTTIMER



Correct sampling procedures and treatment of the tissue samples are important to ensure optimal quality of the analyses. This user manual contains PatoGen's recommendations on how to ensure optimal quality of samples for SmoltTimer.

We recommend that the tissue sampling is done by experienced staff. PatoGen will be happy to answer any questions regarding sampling procedures.

PatoGen Sample Collection Kit

It consists of pre-labelled tubes with RNAlater™, gel ice pack and packaging for transport of the samples to our laboratory. The system is developed to prevent interchange of samples to ensure food quality of the sample tissue that is submitted to PatoGen's laboratory. The kit has a shelf life of six months (expiration date is printed on the side of the kit), and should be stored at room temperature until use.

Sterile technique

Use sterile techniques when collecting the samples in order to avoid contamination between the different samples taken from different fish. When reusing tools we recommend a rapid sterilization by removing organic residuals with paper before a bath in 10 % chlorine, followed by bath in 70% ethanol and burn off. Tip: Use the inside of the scalpel pack to trim the tissue.

Preparation

Before sampling you should have ready:

- Sterile tweezers and scalpel
- Chlorine (10%-mix), gas flare and ethanol (70%)
- PatoGen sampling collection kit
- Tissue
- Pen and paper
- Stable and clean surface

Sampling

- Euthanize the fish with an anaesthetic or stunning – same methods must be used for all sampling
- Extract the entire 2nd gill arch on the left side
- Use a scalpel/scissors to adapt two gill samples (A- and B-sample) in a suitable size from the kink of the gill bow, about 2x2 mm and put the samples in the test tube from PatoGen. It is important the sample size is not too big, because it can cause poor conservation of the samples.
- A submission of 30 gill bow is recommended in order to obtain a representative sample.

Register sampling - Patolink

All samplings that are registered in Patolink get shorter delivery time - 4 working days instead of 5. Contact us if you have any questions about access to Patolink or how to use it.

Register sampling - Requisition and morphology form

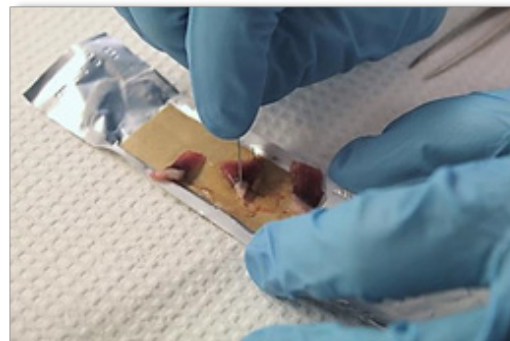
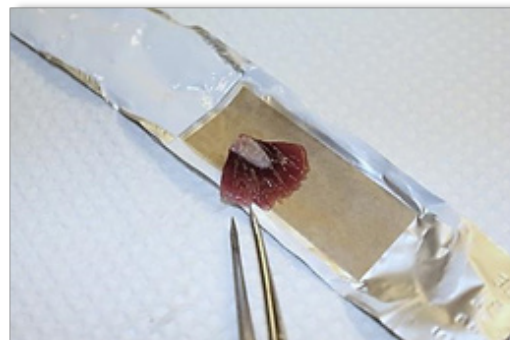
Note details about the samples in the requisition form that followed the kit and send in with the samples. Fill in the morphology form and send to us by email post@patogen.no. The morphology form can be downloaded from patogen.com, or contact us to get it by email.

Storage of the samples before shipment

When the test tubes have been used they should be put on ice/cooler continuously. When doing the sampling over multiple days used test tubes can be stored in a refrigerator for a week before shipment. For longer storage it is recommended that the test tubes are frozen, after having been stored in a refrigerator for 24 hours.

Shipment

If the whole kit is not used, the test tubes can be removed and placed in a plastic bag. The rest of the kit can then be used in the next sampling. The samples should be sent to PatoGen with a cooling brick/ice pack. Send the package by express shipment to the address below. Send the tracking number to sample@patogen.no or +47 957 07 910.



PATOGEN AS - RASMUS RØNNEBERGS GATE 21 - 6002 ÅLESUND - NORWAY