

SAMPLING GUIDE

SMOLTTIMER



Correct sampling procedures and tissue sample handling are important to ensure optimal quality of the analyses. This guide contains PatoGen's recommendations for obtaining optimal sample quality for SmoltTimer.

We recommend that the tissue sampling is done by experienced staff. PatoGen will be happy to answer any questions regarding sampling procedures.

PatoGen Sample Collection Kit

It consists of pre-labeled tubes with RNAlater™, ice pack and secure packaging for sample transport to our laboratory. This system is designed to prevent sample mix-ups and ensure the integrity of the submitted tissue samples. The kit has a shelf life of six months (expiration date is printed on the side of the kit), and should be stored at room temperature until use.

Sterile technique

Use sterile technique to avoid contamination when collecting samples from different fish. When reusing tools we recommend a rapid sterilization by removing organic residuals with paper before a bath in 10 % chlorine, followed by bath in 70% ethanol and burn off. Tip: Use the inside of the scalpel pack to trim the tissue.

Equipment

- Sterile tweezers and scalpel
- Disposable gloves
- Chlorine (10%-mix), gas flare and ethanol (70%)
- PatoGen sampling collection kit
- Tissue
- Pen and paper
- Stable and clean surface

Sampling

- Euthanize the fish with an anaesthetic or stunning – same method of euthanization must be used for all samples.
- With the left side of the fish facing up, extract the entire 2nd gill arch.
- Use a scalpel/scissor to trim two gill samples (A- and B-sample) to an appropriate size (approximately 2x2 mm) from the bend of the gill arch. Place the samples in the designated tubes. Ensure that the sample size is not too large, this may lead to poor preservation.
- We recommend submitting 30 arches bow to ensure a representative sample of the group

Register samples - Patolink

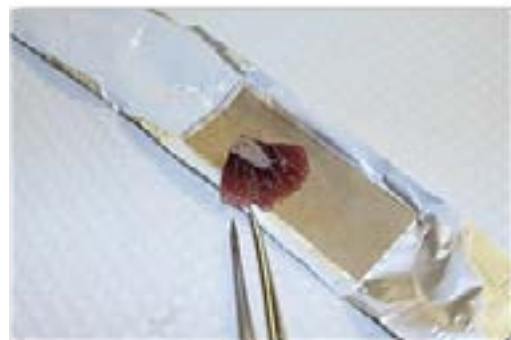
All samples need to be registered in Patolink. The morphology form with details of environment and each fish must be completed. The morphology form can be filled out by hand and emailed to post@patogen.no. Contact us if you have any questions about using or accessing Patolink.

Storage of the samples before shipment

Used test tubes should be placed on ice or in a cooler immediately after use and kept cool. If sampling is conducted over multiple days, the used test tubes can be stored in the fridge for up to one week before shipment. For long-term storage, it is recommended to refrigerate the samples for 24 hours before freezing them.

Shipment

If the whole kit is not used, the test tubes can be removed and placed in a plastic bag. The rest of the kit can then be used in the next sampling. The samples should be sent to PatoGen with a cooling brick/ice pack. Send the package by express shipment to the address below. Send the tracking number to sample@patogen.no or +47 957 07 910. <https://patogen.no/nb/sending-samples/>



NO: PATOGEN AS - RASMUS RØNNEBERGSGATE 21 - 6002 ÅLESUND

UK: PATOGEN - Malin House - European Marine Science Park - Dunbeg - PA37 1SZ Oban